



King Louie
america

2016
UNION-MADE
APPAREL
★ ★ ★



PRODUCT LOCATOR

03	SHIRTS	
16	ACTIVEWEAR	
19	OUTERWEAR	

A complete product index by style name and number is listed on the inside back cover.

All of us at King Louie are proud to be part of our 79th year of manufacturing and supplying union made in the U.S.A apparel to you, our amazing customers. Hopefully you will be as excited about our new style introductions and new color additions as we are.

We truly appreciate all the loyal support that allows us to continue to produce apparel here in the U.S.

Sincerely,

Michael Lerner



J6120 | BIGHORN

MOISTURE MANAGEMENT POLYESTER SHIRT
 Moisture management polyester cationic dyed waffle knit shirt with self-collar and raglan sleeves. Matching 2-button placket and hem sleeves. Union Made in the USA. Sizes: S-5XL
indigo heather J6121, black heather J6125

Visit our website at: www.kinglouie.com

New



W6140 | LADY SUMMERS

LADIES' MOISTURE MANAGEMENT DIAMOND-PATTERNED SHIRT
 100% polyester diamond-patterned moisture management shirt with matching 2-button placket. Raised rib collar and solid sleeve welts. Union Made in the USA. Sizes: S-3XL
 navy W6141, red W6142, black W6145, white W6151

J6140 | SUMMERS

MOISTURE MANAGEMENT DIAMOND-PATTERNED SHIRT
 100% polyester diamond-patterned moisture management shirt with matching 2-button placket. Raised rib collar and solid sleeve welts. Union Made in the USA. Sizes: S-5XL
 navy J6141, red J6142, black J6145, white J6151

New



J6160 | LAVA

SPANDEX MOISTURE MANAGEMENT TEXTURED SHIRT
 94% polyester / 6% spandex moisture management textured shirt with a matching 2-button placket. Matching collar with contrast tipping and solid matching hem sleeve. Union Made in the USA. Sizes: S-5XL
 navy w/white tip J6161
 black w/white tip J6165
 aqua w/black tip J6170
 white w/black tip J6171

W6160 | LADY LAVA

LADIES' SPANDEX MOISTURE MANAGEMENT TEXTURED SHIRT
 94% polyester / 6% spandex moisture management textured shirt with a matching 2-button placket. Matching collar with contrast tipping and hem sleeve. Union Made in the USA. Sizes: S-3XL
 navy w/white tip W6161
 black w/white tip W6165
 aqua w/black tip W6170
 white w/black tip W6171

New



J5000 | McALLISTER

MOISTURE MANAGEMENT SHIRT
 100% polyester cat-dyed two-toned satin stitch moisture management shirt with a 3-button placket, solid collar and welts.
 Union Made in USA. Sizes: S-5XL
navy J5001, black J5005

W5000 | LADY McALLISTER

MOISTURE MANAGEMENT SHIRT
 100% polyester cat-dyed two-toned satin stitch ladies moisture management shirt with a 2-button placket, solid collar and hemmed sleeves.
 Union Made in USA. Sizes: S-3XL
navy W5001, black W5005



J4020 | STILLWELL

MOISTURE MANAGEMENT DROP-NEEDLE INTERLOCK SHIRT
 100% polyester drop-needle vertical stripe interlock polo. Solid collar and sleeve welt. 3-button placket with a set-in sleeve.
 Union Made in the USA. Sizes: S-5XL
navy J4021, black J4025, cobalt blue J4030, stone J4035, oxford J4038

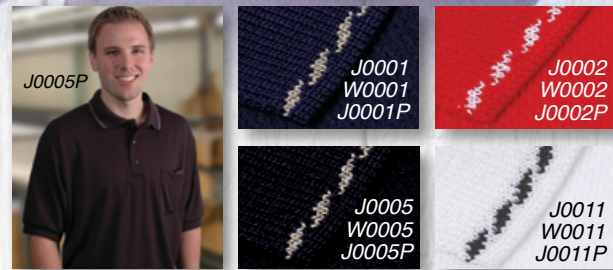
W4020 | LADY STILLWELL

LADIES' MOISTURE MANAGEMENT DROP-NEEDLE INTERLOCK SHIRT
 100% polyester drop-needle vertical stripe interlock polo. 2-button placket with a solid-collar, set-in sleeve with a hemmed cuff.
 Union Made in the USA. Sizes: S-3XL
navy W4021, black W4025, cobalt blue W4030, stone W4035, oxford W4038



J6100 | DUBLIN

BABY SWISS PIQUE SHIRT
 100% polyester baby swiss pique polo with contrast bottom panel. Hem sleeve and matching 2-button placket.
 Union Made in the USA. Sizes: S-5XL
Top/Bottom Colors:
navy/oxford J6101
black/gunmetal J6105
blue/black J6110
navy/red J6111
black/red J6112



J0000 | JAZZ

MOISTURE MANAGEMENT SHIRT

100% polyester Moisture Management shirt with a flat back mesh pattern. "Roped" striped collar, solid welts and a matching 3-button placket. Union made in USA. Sizes: S-5XL
navy/khaki rope J0001, **red/white rope** J0002, **black/khaki rope** J0005, **white/black rope** J0011

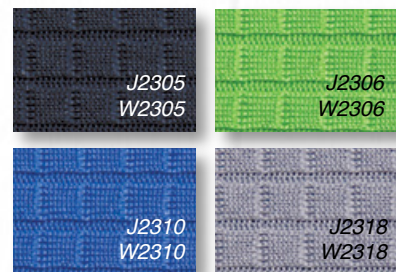
J0000P | JAZZ W/POCKET

navy/khaki rope J0001P, **red/white rope** J0002P, **black/khaki rope** J0005P, **white/black rope** J0011P

W0000 | LADY JAZZ

LADIES' MOISTURE MANAGEMENT SHIRT

100% polyester Moisture Management shirt with a flat back mesh pattern. "Roped" striped collar, hemmed sleeve matching 2-button placket. Union made in USA. Sizes: S-3XL
navy/khaki rope W0001, **red/white rope** W0002, **black/khaki rope** W0005, **white/black rope** W0011



J2300 | WESTON

FASHION MOISTURE MANAGEMENT SHIRT

100% Polyester Fashion Moisture Management box pattern textured shirt with a 3-button placket. Solid knit collar and sleeve welts. Union Made in the USA. Sizes: S-5XL
black J2305, **green** J2306, **blue** J2310, **grey** J2318

W2300 | LADY WESTON

LADIES' PERFORMANCE SPORT SHIRT

Fashion 100% Polyester Moisture Management box pattern textured shirt with a 2-button placket. Solid knit collar with hemmed sleeves. Union Made in the USA. Sizes: S-3XL
black W2305, **green** W2306, **blue** W2310, **grey** W2318



J4000 | CREST

FASHION SHIRT WITH SPANDEX

96% polyester/ 4% Spandex waffle pattern shirt with a solid collar. 3-button placket, hem sleeve and bottom. Union Made in USA. Sizes: S-5XL
red J4002-*new*, **gunmetal** J4005, **cobalt** J4010, **stone** J4015, **moss** J4016, **coral** J4017, **black** J4045-*new*

W4000 | LADY CREST

LADIES' FASHION SHIRT WITH SPANDEX

96% polyester/ 4% Spandex waffle pattern shirt with a solid collar. 2-button placket, hem sleeve and bottom. Union Made in USA. Sizes: S-3XL
red W4002-*new*, **gunmetal** W4005, **cobalt** W4010, **stone** W4015, **moss** W4016, **coral** W4017, **black** W4045-*new*



J5020 | ASHTON

MOISTURE MANAGEMENT SHIRT

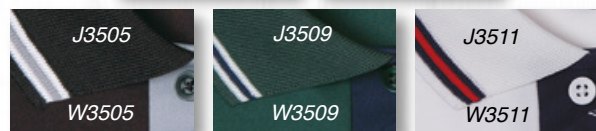
100% polyester off set mesh moisture management shirt. 3-button placket with matching button, set-in hemmed sleeves and a self-collar. Union Made in USA. Sizes: S-5XL
navy J5021, **red** J5022, **black** J5025, **white** J5031, **blue** J5030

W5020 | LADY ASHTON

MOISTURE MANAGEMENT SHIRT

100% polyester off-set mesh ladies moisture management shirt. 2-button placket with matching button, set-in hemmed sleeves and a self-collar. Union Made in USA. Sizes: S-3XL
navy W5021, **red** W5022, **black** W5025, **white** W5031, **blue** W5030





J3500 | NAPA

FASHION MOISTURE MANAGEMENT SHIRT

100% polyester moisture management baby swiss pique shirt. 2-button placket with stripped collars and welts using a 3-color trim pattern. Union Made in the USA. Sizes: S-5XL

Navy body with Red placket w Navy, White, Red stripes J3501, **Red body with Black placket w Red, White, Black stripes** J3502, **Black body with Grey placket w Black, White, Grey stripes** J3505, **Dk Green body with Navy placket w Dk Green, White, Navy stripes** J3509, **White body with Navy placket w White, Navy, Red stripes** J3511

W3500 | LADY NAPA

LADIES' FASHION MOISTURE MANAGEMENT SHIRT

Ladies 100% polyester moisture management baby-swiss pique shirt. 2-button placket with stripped collars and welts using a 3-color trim pattern. Union Made in the USA. Sizes: S-3XL

Navy body with Red placket w Navy, White, Red stripes W3501, **Red body with Black placket w Red, White, Black stripes** W3502, **Black body with Grey placket w Black, White, Grey stripes** W3505, **Dk Green body with Navy placket w Dk Green, White, Navy stripes** W3509, **White body with Navy placket w White, Navy, Red stripes** W3511



J3300 | EDGE

FASHION MOISTURE MANAGEMENT SHIRT

100% Polyester Swiss Fashion Moisture Management shirt with contrasting armhole piping and a 3-button placket. Tipped collar, matching piping with hemmed sleeve. Union Made in the USA. Sizes: S-5XL

navy J3301, **red** J3302, **black** J3305, **white** J3311

W3300 | LADY EDGE

LADIES' FASHION MOISTURE MANAGEMENT SHIRT

100% Polyester Swiss Fashion Moisture Management shirt with contrasting armhole piping and a 2-button placket. Tipped collar, matching piping with hemmed sleeve. Union Made in the USA. Sizes: S-3XL

navy W3301, **red** W3302, **black** W3305, **white** W3311



J1120 | PERFORMER

MOISTURE MANAGEMENT SHIRT

Moisture Management baby swiss pique polo. Solid color shirt with solid knit collar, sleeve welts and three button placket. Union Made in USA. Sizes: S-5XL

navy J1121, **red** J1122, **aqua** J1123, **black** J1125, **sunburst** J1124, **green** J1126, **orange** J1127, **dark green** J1129, **blue** J1130, **white** J1131, **violet** J1132, **khaki** J1135, **gunmetal** J1136, **grey** J1138, **charcoal** J1139

W1120 | LADY PERFORMER

LADIES' MOISTURE MANAGEMENT SHIRT

Moisture Management baby swiss pique polo shirt. Solid color shirt with hemmed sleeves, and 2-button placket. Union Made in USA. Sizes: S-3XL

navy W1121, **red** W1122, **aqua** W1123, **black** W1125, **sunburst** W1124, **green** W1126, **orange** W1127, **dark green** W1129, **blue** W1130, **white** W1131, **violet** W1132, **khaki** W1135, **gunmetal** W1136, **grey** W1138, **charcoal** W1139



J4500 | NATIONAL

COTTON SOLID SPORT SHIRT

100% cotton pique knit. Solid color with knit collar and welts, three rim pearl button placket. Union Made in USA. Sizes: S-5XL

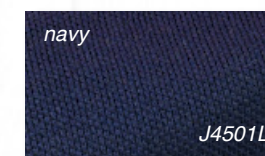
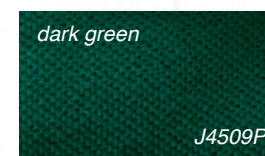
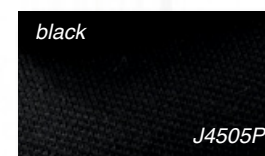
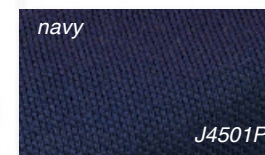
navy J4501, **red** J4502, **royal** J4503, **black** J4505, **dark green** J4509, **white** J4511, **purple** J4512, **oxford** J4538

W4500 | LADY NATIONAL

LADIES' SOLID 100% COTTON PIQUE

100% cotton ladies shirt. Solid color knit collar and welts with 2 rim pearl buttons. Union Made in USA. Sizes: S-3XL

navy W4501, **red** W4502, **black** W4505, **dark green** W4509, **white** W4511, **purple** W4512,



J4500P | NATIONAL W/POCKET

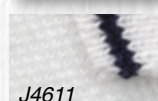
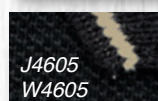
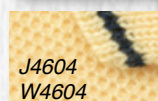
100% cotton pique knit. Solid color with knit collar and welts, left chest pocket, three rim pearl button placket.

Union Made in USA. Sizes: S-5XL
navy J4501P, **black** J4505P, **dark green** J4509P

J4500L | NATIONAL LONG SLEEVE

100% cotton pique knit. Long sleeve polo, solid color with knit collar and cuffs, three rim pearl button placket. Union Made in USA. Sizes: S-5XL

navy J4501L, **black** J4505L



J4600 | TRADITION

COTTON SPORT SHIRT

100% cotton pique knit. Matching knit collar and welts with narrow contrasting accent stripe, three rim pearl buttons. Union Made in USA. Sizes: S-5XL
navy-white stripe J4601, **yellow-navy stripe** J4604, **black-khaki stripe** J4605, **white-navy stripe** J4611, **khaki-black** J4615,

J4600P | TRADITION W/POCKET

navy-white stripe J4601P, **black-khaki stripe** J4605P, **white-navy stripe** J4611P

W4600 | LADY TRADITION

LADIES' COTTON SPORT SHIRT

100% cotton pique knit. Ladies' cut, 2-button placket, matching knit collar and welts with narrow contrasting accent stripe. Union Made in USA. Sizes: S-3XL
navy-white stripe W4601, **yellow-navy stripe** W4604, **black-khaki stripe** W4605



USA | FREEDOM

PATRIOTIC SPORT SHIRT

100% cotton pique. Solid body with "patriotic themed" knit collar and sleeve welt. 3-button placket with dyed-to-match buttons. Union Made in USA. Sizes: S-5XL
navy USA102, **white** USA003

WUSA | LADY FREEDOM

LADIES' PATRIOTIC SPORT SHIRT

100% cotton pique. Ladies' fit, solid body with stars-and-stripes knit collar and solid knit welt on shorter set-in sleeve. 3-button placket with dyed-to-match buttons, hemmed bottom. Union Made in USA. Sizes: S-3XL
white WUSA03



J180 | SKYLINE

POCKETED PIQUE SPORT SHIRT

Blended 60% cotton/ 40% polyester double pique. Matching knit collar, hemmed sleeve, 2-button placket with matching buttons, left chest pocket, hemmed bottom. Union Made in USA. Sizes: S-3XL
 Big Sizes: 4XL and 5XL in colors indicated *
navy J181*, **red** J182, **royal** J183, **black** J185, **maroon** J188, **dark green** J189, **white** J191, **purple** J192



J4060 | SHOAL

QUARTER-ZIP FASHION LONG SLEEVE SHIRT

Men's quarter-zip, long sleeve 100% poly jersey with an open bottom. Zip-thru contrasting inside collar with knit cuffs. Union Made in USA. Sizes: S-5XL
black w/stone J4065, **stone w/black** J4075

MEN'S



LADY SHOAL

See page 21 for details

J5060 | HAWK

LONG SLEEVE MOISTURE MANAGEMENT SHIRT

Solid-colored long-sleeve, 100% polyester heavyweight baby swiss pique shirt with matching 3-button placket. Union Made in USA. Sizes: S-5XL
navy J5061, **black** J5065



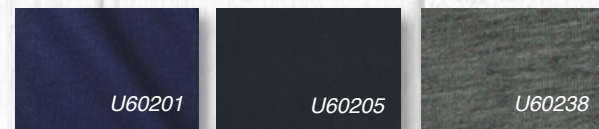
New



◀ **U602** | LEGACY

CREWNECK SWEATSHIRT

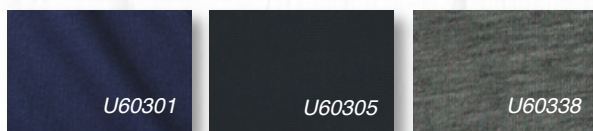
Soft 80% cotton/20% polyester heavyweight 9 oz. crew neck fleece sweatshirt. Union Made in USA. Sizes: S-5XL
navy U60201, **black** U60205, **charcoal** U60258



U603 | LEGACY PULLOVER ▶

FLEECE HOODIE

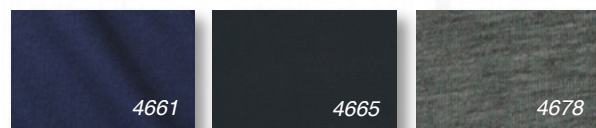
Soft 80% cotton/ 20% polyester heavyweight 9 oz. fleece pullover hoodie. Muff pockets. Union Made in USA. Sizes: S-5XL
navy U60301, **black** U60305, **charcoal** U60338



◀ **4660** | LEGACY HOOD

CLASSIC FULL ZIP HOODIE

Soft 80% cotton/20% polyester heavyweight 9 oz. fleece full zip hooded sweatshirt with kangaroo pockets. Union Made in USA. Sizes: S-5XL
navy 4661, **black** 4665, **charcoal** 4678



6400 | OMEGA

DOUBLE-KNIT FLEECE PULLOVER

100% polyester double-knit performance fleece pullover hoodie. Contrast hood, open bottom and knit cuffs. Union Made in USA. Sizes: S-5XL
navy w/fashion blue 6401
black w/charcoal 6405



5201



5202



5205

5200 | EXPLORER

POLAR FLEECE JACKET

100% Polyester polar fleece full zip jacket in solid colors. Side entry pockets and elastic bottom and cuffs. Union made in USA. Sizes: S-5XL
navy 5201, red 5202, black 5205



5301



5302



5305

5300 | TUNDRA

POLAR FLEECE PULLOVER

100% Polyester polar fleece 1/4 zip pullover in solid colors. Side entry pockets, hemmed open bottom and elastic cuffs. Union made in USA. Sizes: S-5XL
navy 5301, red 5302, black 5305

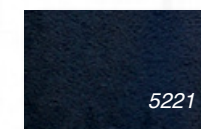


Microfiber

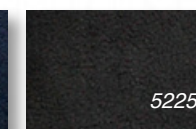
5225



Polar Fleece



5221



5225

5220 | SHADOW

FASHION POLAR FLEECE JACKET

Polar fleece jacket with fashion Microfiber top panel. Full-zip front, side pockets with self-elastic cuff and bottom. Union Made in USA. Sizes: S-5XL
navy 5221, black 5225

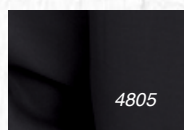
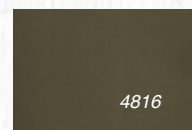
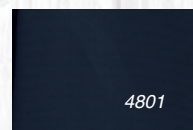


Fabric Detail

4800 | AVENUE

MICROFIBER JACKET

Unlined 100% polyester jacquard microfiber jacket with side seam pockets, a hemmed bottom and elastic sleeve cuffs. Hidden full-zip front with a stand up collar. Union Made in USA. Sizes: S-5XL
navy 4801, black 4805, olive 4816, charcoal 4818



1470 | SOLID SATIN QUILT LINED

SOLID SATIN QUILT LINED

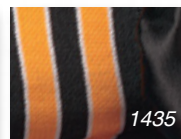
Water resistant 100% DuPont® nylon satin with winterweight 100% polyester quilt lining. Full snap front, double welt storm flap, matching solid knit trim on collar, cuff and waistband, raglan sleeve, slash pockets. Union made in USA. Sizes: S-3XL
navy 1471, red 1472, black 1475



1430 | PRO SATIN QUILTED

SATIN AWARD JACKET WITH STIPED TRIM

Water resistant 100% DuPont® nylon satin with winterweight 100% polyester quilt lining. Full snap front, double welt storm flap, striped knit trim on collar, cuff and waistband, raglan sleeve, slash pockets. Union made in USA. Sizes: S-3XL
navy w/navy-white-gold 1431, black w/black-white-gold 1435



LADIES' JACKET

L4060 | LADY SHOAL

LADIES' FULL ZIP JACKET

100% polyester full zip ladies' jacket. Zip thru collar, welt pockets with hemmed bottom and sleeves. Union Made in the USA. Sizes: S-3XL
black L4065, stone L4075



MEN'S SHOAL

See page 15 for details



4300 | MENTONE

FASHION PULLOVER

Unlined Microfiber 1/4 zip windshirt with matching knit collar and exposed coil zipper. Side seam pockets, elastic cuffs and an open bottom. Union Made in the USA. Sizes: S-5XL
navy 4301, black 4305, periwinkle 4310





4060 | FAIRVIEW

MICROFIBRE WINDSHIRT

100% polyester microfibre with 100% nylon taffeta lining. Athletic lap v-neck knit collar, set-in sleeve, birdseye trim with solid tipping on collar, cuff and waistband, convenient side seam pockets. Union Made in USA. Sizes: S-5XL
navy 4061, black 4065

1960 | FINLEY

POPLIN GOLF PULLOVER

65% polyester/35% soft cotton micro poplin. Soft knit lap crewneck collar, set-in sleeve, convenient side seam pockets, matching knit trim at cuff and waistband. Union Made in USA. Sizes: S-5XL
navy 1961, black 1965, khaki 1975



4100 | JOURNEY

MICROFIBRE WINDSHIRT

Unlined, solid colored Microfibre windshirt. Side entry pockets with drop crew neck and matching knit. Union Made in USA. Sizes: S-5XL
navy 4101, black 4105, burgundy 4108, dark green 4109, brown 4113



4200 | WEEKEND

MICROFIBRE LINED WINDSHIRT

Solid colored Microfibre windshirt with black nylon lining. Side entry pockets with drop crew neck and matching knit. Union Made in USA. Sizes: S-5XL
navy 4201, black 4205, burgundy 4208, dark green 4209, brown 4213

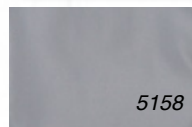
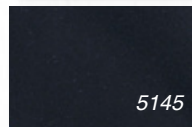
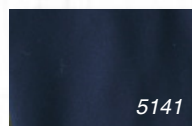


1700 | FENWAY

POPLIN BASEBALL JACKET

65% polyester/35% soft cotton micro poplin with lightweight 100% nylon lining. Full zip front with antique brass zipper, knit trim collar, cuff and waistband with accent striping, contrasting set-in sleeve, welt pockets, inside pocket. Union Made in USA. Sizes: S-5XL

navy/stone 1701

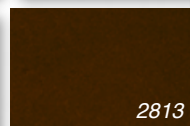
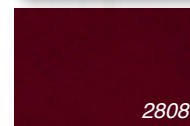


5140 | CHURCHILL

UNLINED MICROFIBRE SPORT JACKET

100% Polyester heavier-weight Microfibre unlined jacket with exposed coil zipper. Zip-thru collar, 1/2 elastic cuff, vertical double-welted pockets with an hemmed open-bottom. Union Made in the USA. Sizes: S-5XL

navy 5141, black 5145, grey 5158



2800 | LUXURY

MICROFIBRE GENTLEMEN'S JACKET

Microfibre gentlemen's jacket with black nylon lining. Side entry pockets with drop neck and matching knit. Woodtone button cuff closure. Union Made in USA. Sizes: S-5XL

navy 2801, black 2805, burgundy 2808, brown 2813



2860 | DAWSON

MICROFIBRE SPORT JACKET

Microfibre jacket lined with 100% nylon taffeta. Zip-thru contrasting collar, set-in sleeve with solid nylon knit cuff, zip front, nylon knit waistband, inside pocket. Union Made in USA. Sizes: XS-5XL

navy/khaki 2861, black/silver 2865



3800 | MAXFIELD

SOFT SHELL BONDED FLEECE VEST

94% polyester / 6% spandex bonded fleece full zip vest. A full zip-through collar with an additional fashion right-chest zipper. Welt pockets and a hemmed bottom.

Union Made in USA. Sizes: S-5XL
navy 3801, black 3805



4920 | DOWNTOWN

MICROFIBRE SPORT JACKET

Full zip, 100% Microfibre jacket with nylon lining. Two-color collar with a contrasting storm flap. Fake cape with an inside pocket and gathered elastic waist. Union Made in USA. Sizes: S-5XL
navy/gold 4921, black/khaki 4925, green/navy 4929



4490 | WOODCLIFF

GENTLEMAN'S JACKET

65% polyester/35% soft cotton micro Poplin. Full zip jacket, lightly lined with nylon, contrasting color inside collar with drawstrings and cordlocks, front cape for clean finish embroidery, set-in sleeves with self-elastic cuff, welt pockets, set-on self-elastic waistband. Union made in USA. Sizes: S-5XL
navy w/gray 4491, black w/khaki 4495

L3800 | LADY MAXFIELD

LADIES' SOFT SHELL BONDED FLEECE VEST

94% polyester / 6% spandex bonded fleece full zip vest. A full zip-through collar with an additional fashion right-chest zipper. Welt pockets and a hemmed bottom.

Union Made in USA. Sizes: S-3XL
navy L3801, black L3805



New



3700 | CHALLENGER

SOFT SHELL JACKET

94% polyester/6% spandex bonded fleece full zip jacket with zip through collar and additional right chest fashion zipper. Self-elastic cuff, welt pockets, inside storm flap and hemmed open-bottom. Union Made in USA. Sizes: S-5XL
navy 3701, black 3705, charcoal 3718-new

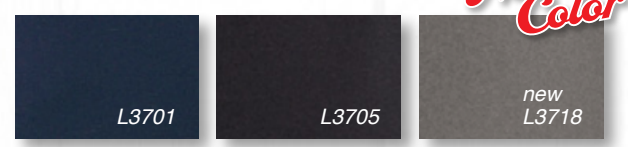


3720 | BUTTE

SOFT SHELL CONTRAST JACKET

94% polyester/6% spandex bonded fleece full zip jacket with side panel contrast. Zip through collar and additional right chest fashion zipper. Self-elastic cuffs, welt pockets, inside storm flap and hemmed open-bottom. Union Made in USA. Sizes: S-5XL
navy w/charcoal 3721
black w/charcoal 3725
charcoal w/black 3738

Side Panel Detail



L3700 | LADY CHALLENGER

SOFT SHELL LADIES' JACKET

94% polyester/6% spandex bonded fleece full zip jacket with zip through collar and additional right chest fashion zipper. Self-elastic cuff, welt pockets, inside storm flap and hemmed open-bottom. Union Made in USA. Sizes: S-3XL
navy L3701, black L3705, charcoal L3718-new



L3720 | LADY BUTTE

SOFT SHELL LADIES' CONTRAST JACKET

94% polyester/6% spandex bonded fleece full zip jacket with side panel contrast. Zip through collar and additional right chest fashion zipper. Self-elastic cuffs, welt pockets, inside storm flap and hemmed open-bottom. Union Made in USA. Sizes: S-3XL
navy w/charcoal L3721
black w/charcoal L3725
charcoal w/black L3738



1600 | BOULDER

RIP STOP JACKET

100% nylon coated ripstop hooded full zip jacket with blended fleece lining. Raglan sleeves, open bottom, self-elastic sleeve cuffs and a black draw cord in the hood. Union Made in USA. Sizes: S-5XL
navy 1601, black 1605



6900 | ELEMENTS

RAIN JACKET

100% Nylon Taslon rain jacket with breathable micro-waterproof coating. Hidden hood, mesh lining and front zipper closure with snap storm flap. Adjustable velcro cuffs and flap closure top entry pockets. *Garment is not seam sealed. Union Made in USA. Sizes: S-5X
black 6905



3620 | VOYAGE

CLASSIC SQUALL JACKET

Heavyweight poplin shell, lined with micro polar fleece lining. Zip-thru collar, slash pockets, inside pocket, knit cuff and waistband. Union Made in USA. Sizes: S-5XL
navy 3621, red 3622, royal 3623, black 3625



L6000 | DARBY

LADIES' CLASSIC SQUALL JACKET

Heavyweight Poplin with micropolar fleece lining. Ladies' styled jacket features zip-thru collar, open cuff and bottom with double welt pockets. Union Made in USA. Sizes: S-3XL
navy L6001, red L6002, black L6005, blue L6010, sage L6016, coral L6017





3600 | ADVANTAGE
3-IN-1 SYSTEMS JACKET
 3-in-1 jacket, micro poplin shell with nylon lining, double entry pockets, zip-thru collar, inner, zip-out vest of micro polar fleece. Union Made in USA. Sizes: S-5XL
 navy 3601, black 3605



3040 | KENDALL
UTILITY JACKET
 65% polyester/35% cotton soft micro poplin, quilted nylon lining with 3.3 oz. polyfil. Zipper/snap front closure, faux cape, set-in sleeve with self-elastic cuff, contrasting color detail, inside pocket, self-elastic waist. Union Made in USA. Sizes: S-5XL
 navy/khaki 3041, black/khaki 3045, dark green/khaki 3049



6800 | CANYON
FULL-FIT DUCK JACKET
 100% cotton heavy-weight Canvas Duck jacket with quilt lining. Raglan sleeves, pouch pockets, inside pocket and brass zipper. Knit cuffs and with modified waistband and tone on tone matching collar. Union Made in USA. Sizes: S-5XL
 navy 6801, spice 6804, black 6805



1300 | CUMBERLAND

HOODED CANVAS DUCK JACKET
 Heavyweight canvas jacket lined with 100% polyester black diamond patterned thermal. Drawstring hood, full zip front with large brass pull, raglan sleeve with nylon knit cuff and waistband, large pouch pockets, inside pocket. Union Made in USA. Sizes: S-5XL
spice 1304, black 130503



6500 | STATION

HEAVYWEIGHT CANVAS DUCK JACKET
 100% cotton heavyweight Canvas Duck jacket with a cotton sheeting lining, tone-on-tone matching corduroy collar and a right front-chest fashion zippered pocket. Full zip brass zippered front with slash pockets and an adjustable snap cuff. Waist-length open-bottom. Union Made in USA.
 Sizes: S-5XL
black 6505

INDEXED BY SERIES NUMBER

SERIES	NAME	PAGE
1300	Cumberland	34
1430	Pro Satin Quilted	20
1470	Solid Satin Quilted	20
1600	Boulder	30
1700	Fenway	24
1960	Finley	22
2800	Luxury	25
2860	Dawson	25
3040	Kendall	32
3600	Advantage	32
3620	Voyage	31
3700	Challenger	28
3720	Butte	29
3800	Maxfield	27
4060	Fairview	22
4100	Journey	23
4200	Weekend	23
4300	Mentone	21
4490	Woodcliff	26
4660	Legacy Hood	16
4800	Avenue	20
4920	Downtown	26
5140	Churchill	24
5200	Explorer	18
5220	Shadow	19
5300	Tundra	18
6400	Omega	17
6500	Station	34
6800	Canyon	33
6900	Elements	30
J0000	Jazz	8
J0000P	Jazz w/ pocket	8
J1120	Performer	11
J180	Skyline (Darks)	14
J191	Skyline (White)	14
J2300	Weston	8
J3300	Edge	10
J3500	Napa	10
J4000	Crest	9
J4020	Stillwell	6

J4060	Shoal	15
J4500	National (Darks)	12
J4511	National (White)	12
J4500L	National Long Sleeve	13
J4500P	National w/pocket	13
J4600	Tradition (Darks)	14
J4611	Tradition (White)	14
J4600P	Tradition w/pocket	14
J4611P	Tradition White w/pocket	14
J5000	McAllister	6
J5020	Ashton	9
J5060	Hawk	15
J6100	Dublin	7
J6120	Bighorn	3
J6140	Summers	4
J6160	Lava	5
L3700	Lady Challenger	28
L3720	Lady Butte	29
L3800	Lady Maxfield	27
L4060	Lady Shoal	21
L6000	Darby	31
U602	Legacy Crewneck	16
U603	Legacy Pullover	16
USA	Freedom	14
W0000	Lady Jazz	8
W1120	Lady Performer	11
W2300	Lady Weston	8
W3300	Lady Edge	10
W3500	Lady Napa	10
W4000	Lady Crest	9
W4020	Lady Stillwell	6
W4500	Lady National	12
W4511	Lady National (White)	12
W4600	Lady Tradition	14
W5000	Lady McAllister	6
W5020	Lady Ashton	9
W6140	Lady Summers	4
W6160	Lady Lava	5
WUSA	Lady Freedom	14

INDEXED BY SERIES NAME

NAME	SERIES	PAGE
Advantage	3600	32
Avenue	4800	20
Ashton	J5020	9
Bighorn	J6120	3
Boulder	1600	30
Butte	3720	29
Canyon	6800	33
Challenger	3700	28
Churchill	5140	24
Crest	J4000	9
Cumberland	1300	34
Darby	L6000	31
Dawson	2860	25
Downtown	4920	26
Dublin	J6100	7
Edge	J3300	10
Elements	6900	30
Explorer	5200	18
Fairview	4060	22
Fenway	1700	24
Finley	1960	22
Freedom	USA	14
Hawk	J5060	15
Jazz	J0000	8
Jazz w/ pocket	J0000P	8
Journey	4100	23
Kendall	3040	32
Lady Ashton	W5020	9
Lady Butte	L3720	29
Lady Challenger	L3700	28
Lady Crest	W4000	9
Lady Edge	W3300	10
Lady Freedom	WUSA	14
Lady Jazz	W0000	8
Lady Lava	W6160	5
Lady Maxfield	L3800	27
Lady McAllister	W5000	6
Lady Napa	W3500	10
Lady National	W4500	12
Lady National (White)	W4511	12
Lady Performer	W1120	11
Lady Shoal	L4060	21
Lady Stillwell	W4020	6
Lady Summers	W6140	4
Lady Tradition	W4600	14
Lady Tradition (Darks)	J4600	14
Lady Tradition (White)	J4611	14
Lady Tradition w/pocket	J4600P	14
Lady Tradition White w/pocket	J4611P	14
Lady Weston	W2300	8
Lava	J6160	5
Legacy Crewneck	U602	16
Legacy Hood	4660	16
Legacy Pullover	U603	16
Luxury	2800	25
Maxfield	3800	27
McAllister	J5000	6
Mentone	4300	21
Napa	J3500	10
National (Darks)	J4500	12
National (White)	J4511	12
National Long Sleeve	J4500L	13
National w/pocket	J4500P	13
Omega	6400	17
Performer	J1120	11
Pro Satin Quilted	1430	20
Shadow	5220	19
Shoal	J4060	15
Skyline (Darks)	J180	14
Skyline (White)	J191	14
Solid Satin Quilted	1470	20
Station	6500	34
Stillwell	J4020	6
Summers	J6140	4
Tradition (Darks)	J4600	14
Tradition (White)	J4611	14
Tradition w/pocket	J4600P	14
Tradition White w/pocket	J4611P	14
Tundra	5300	18
Voyage	3620	31
Weekend	4200	23
Weston	J2300	8
Woodcliff	4490	26

Bold copy indicates styles that are new for 2016 King Louie product line.



King Louie
america

“ask for the king”

www.kinglouie.com
asi/64860 ppai/337199