



 **HIGH FIVE**[®]
BASEBALL/SOFTBALL 2017

STYLE INDEX



ADULT

12220	ACE FULL-BUTTON JERSEY	35
12120	ACE TWO-BUTTON JERSEY	31
12210	BANDIT TWO-BUTTON JERSEY	27
12230	BANDIT PRINT INSET TWO-BUTTON JERSEY	27
15040	CLASSIC DOUBLE-KNIT BB PANT	44
19420	DOUBLE-KNIT PULL-UP BB PANT	45
12050	ELLIPSE TWO-BUTTON JERSEY	32
32160	ESSORTEX SLEEVELESS SHIRT	36
12060	ESSORTEX TWO-BUTTON JERSEY	37
72300	EVOLUTION S/S	39
72310	EVOLUTION L/S	43
12130	GRAVITY TWO-BUTTON JERSEY	29
22870	HAWK JERSEY	37
12080	IMPACT FULL-BUTTON JERSEY	33
12070	IMPACT TWO-BUTTON JERSEY	33
22820	KINETIC JERSEY	40
22780	LIBERTY JERSEY	36
15050	PIPED CLASSIC DOUBLE-KNIT BB PANT	44
15080	PIPED DOUBLE-KNIT BB PANT	45
72330	PRINTED EVOLUTION S/S	39
72340	PRINTED EVOLUTION L/S	43
22710	TEMPEST JERSEY	41
12200	WILDCARD TWO-BUTTON JERSEY	25

WOMEN'S

15122	ARC SOFTBALL PANT	22
12192	NEW DOUBLE PLAY JERSEY	7
12162	DYNAMITE JERSEY	19
72322	EVOLUTION S/S	15
12142	FAUX FRONT JERSEY	9
12152	FEVER JERSEY	21
12022	FLEX JERSEY	17
15022	FLEX SHORT	17
12172	GALAXY JERSEY	11
22872	HAWK JERSEY	13
12182	LIGHTNING JERSEY	13
15102	PIPED PROSTYLE LOW-RISE SB PANT	23
72332	PRINTED EVOLUTION S/S	15
15052	PROSTYLE LOW-RISE SB PANT	22
15152	SPIRAL FULL-LENGTH SB PANT	23
15132	UNBELTED SOFTBALL PANT	23
12032	WAVE JERSEY	17

YOUTH

12221	ACE FULL-BUTTON JERSEY	35
12121	ACE TWO-BUTTON JERSEY	31
12211	BANDIT TWO-BUTTON JERSEY	27
12231	BANDIT PRINT INSET TWO-BUTTON JERSEY	27
15041	CLASSIC DOUBLE-KNIT BB PANT	44
19421	DOUBLE-KNIT PULL-UP BB PANT	45
12051	ELLIPSE TWO-BUTTON JERSEY	32
32170	ESSORTEX SLEEVELESS SHIRT	36
12061	ESSORTEX TWO-BUTTON JERSEY	37
72301	EVOLUTION S/S	39
72311	EVOLUTION L/S	43
12131	GRAVITY TWO-BUTTON JERSEY	29
22871	HAWK JERSEY	37
12081	IMPACT FULL-BUTTON JERSEY	33
12071	IMPACT TWO-BUTTON JERSEY	33
22821	KINETIC JERSEY	40
22781	LIBERTY JERSEY	36
15051	PIPED CLASSIC DOUBLE-KNIT BB PANT	44
15081	PIPED DOUBLE-KNIT BB PANT	45
72331	PRINTED EVOLUTION S/S	39
72341	PRINTED EVOLUTION L/S	43
22711	TEMPEST JERSEY	41
12201	WILDCARD TWO-BUTTON JERSEY	25

GIRLS'

15123	ARC SOFTBALL PANT	22
12193	NEW DOUBLE PLAY JERSEY	7
12163	DYNAMITE JERSEY	19
72323	EVOLUTION S/S	15
12143	FAUX FRONT JERSEY	9
12153	FEVER JERSEY	21
12023	FLEX JERSEY	17
15023	FLEX SHORT	17
12173	GALAXY JERSEY	11
12183	LIGHTNING JERSEY	13
15103	PIPED PROSTYLE LOW-RISE SB PANT	23
72333	PRINTED EVOLUTION S/S	15
15053	PROSTYLE LOW-RISE SB PANT	22
15153	SPIRAL FULL-LENGTH SB PANT	23
15133	UNBELTED SOFTBALL PANT	23
12033	WAVE JERSEY	17

BAGS

27850	BACKPACK	48
27920	NEW CONVERTIBLE STRING BACKPACK	48
27880	ELITE TRAINING BAG	49
27870	GEAR BAG	49
27890	NEW MULTISPORT BACKPACK	47
27720	STADIUM EQUIPMENT BAG	49
27790	TRAINING BAG	49

ACCESSORIES

28030	ATHLETIC SOCK	51
19820	BASEBALL BELT	50
19700	COTTON TWILL SIX-PANEL CAP	50
19810	GAME SOCK	51
29100	DAGGER SLEEVE	50
29222	QUALIFIER HEADBAND	50
19760	SPORT TWILL VISOR	50
19800	STIRRUP SOCK	51

ALL PRICES ARE MSRP AND SUBJECT TO CHANGE WITHOUT NOTICE

WILDCARD JERSEY
PAGE 25

DYNAMITE JERSEY
PAGE 19



YOUR BASEBALL & SOFTBALL UNIFORM SOLUTION

CONTACT CUSTOMER SERVICE FOR DETAILS ON OUR FULL RANGE OF BASEBALL/SOFTBALL UNIFORMS & ACCESSORIES TO COVER ALL YOUR NEEDS

OPEN FROM 9:00AM TO 7:00PM EST • 800-222-4016

SEE THE 2017 *HIGH FIVE COLLECTION* PAGES 4-5



DOUBLE PLAY JERSEY
PAGE 7

PRINTED EVOLUTION S/S
PAGE 39

FAUX FRONT JERSEY
PAGE 9

BANDIT TWO-BUTTON JERSEY
PAGE 27



THE 2017 HIGH FIVE COLLECTION

SOFTBALL JERSEYS

WOMEN'S FLEX

STYLES: 12022 WS-W2XL / 12023 GS-GL



PAGE 17 **TOP SELLER** \$16.00

LIGHTNING V-NECK

STYLES: 12182 WS-W2XL / 12183 GM-GL



PAGE 13 \$17.00

WOMEN'S WAVE

STYLES: 12032 WS-W2XL / 12033 GS-GL



PAGE 17 **TOP SELLER** \$18.00

WOMEN'S HAWK

STYLES: 22872 WXS-W2XL



PAGE 13 \$18.00

WOMEN'S EVOLUTION

STYLES: 72322 WS-W2XL / 72323 GS-GL



PAGE 15 \$18.00

WOMEN'S DYNAMITE

STYLES: 12162 WS-W2XL / 12163 GS-GL



PAGE 19 **TOP SELLER** \$18.00

UNBELTED

STYLES: 15132 WS-W2XL / 15133 GS-GL



PAGE 23 \$22.00

PROSTYLE LOW-RISE

STYLES: 15052 WS-W2XL / 15053 GS-GL



PAGE 22 **TOP SELLER** \$28.90

ARC

STYLES: 15122 WS-W2XL / 15123 GS-GL



PAGE 22 \$31.00

SPIRAL FULL-LENGTH

STYLES: 15152 WS-W2XL / 15153 GM-GL



PAGE 23 \$33.00

PIPED PROSTYLE LOW-RISE

STYLES: 15102 WS-W2XL / 15103 GS-GL



PAGE 23 \$33.30

BASEBALL JERSEYS

ESSORTEX TWO-BUTTON

STYLES: 12060 AS-A3XL / 12061 YXS-YL



PAGE 37 \$16.50

EVOLUTION L/S

STYLES: 72310 AS-A3XL / 72311 YS-YL



PAGE 43 \$23.00

PRINTED EVOLUTION L/S

STYLES: 72340 AS-A3XL / 72341 YS-YL



PAGE 43 \$24.00

TEMPEST

STYLES: 22710 AS-A2XL / 22711 YXS-YL



PAGE 41 \$24.50

BANDIT

STYLES: 12210 AS-A3XL / 12211 YS-YL



PAGE 27 **TOP SELLER** \$25.50

GRAVITY TWO-BUTTON

STYLES: 12130 AS-A2XL / 12131 YS-YL



PAGE 29 **TOP SELLER** \$26.00

BANDIT PRINT INSET

STYLES: 12230 AS-A3XL / 12231 YS-YL



PAGE 27 \$26.50

BASEBALL BOTTOMS

DOUBLE-KNIT PULL-UP

STYLES: 19420 AS-A2XL / 19421 YXS-YXL



PAGE 45 **TOP SELLER** \$13.80

CLASSIC DOUBLE-KNIT

STYLES: 15040 AS-A2XL / 15041 YS-YXL



PAGE 44 \$28.30

PIPED CLASSIC DOUBLE-KNIT

STYLES: 15050 AS-A2XL / 15051 YS-YXL



PAGE 44 \$30.00

PIPED DOUBLE-KNIT

STYLES: 15080 AS-A2XL / 15081 YS-YXL



PAGE 45 \$35.40

ACCESSORIES

GAME SOCK

STYLE: 19810 SMALL, MEDIUM, LARGE



PAGE 51 \$5.80

STIRRUP SOCK

STYLE: 19800 SMALL, MEDIUM, LARGE



PAGE 51 \$5.90

BAGS

CONVERTIBLE DRAWSTRING BAG

STYLES: 27920 ONE SIZE



PAGE 48 **NEW** \$11.00

BACKPACK

STYLE: 27850 ONE SIZE



PAGE 48 **TOP SELLER** \$23.50

TRAINING BAG

STYLE: 27790 ONE SIZE



PAGE 49 \$25.00

GEARBAG

STYLE: 27870 ONE SIZE



PAGE 49 \$27.00

ELITE TRAINING BAG

STYLE: 27880 ONE SIZE



PAGE 50 \$28.00

STADIUM EQUIPMENT BAG

STYLE: 27720 ONE SIZE



PAGE 49 \$28.50

CALL 800-222-4016 FOR LEAGUE AND VOLUME PRICING

WOMEN'S PRINTED EVOLUTION
STYLES: 72332 WS-W2XL / 72333 GS-6L



PAGE 15 **\$19.00**

WOMEN'S FEVER

JERSEY STYLES: 12152 WS-W2XL / 12153 GS-6L



PAGE 21 **\$20.00**

WOMEN'S DOUBLE PLAY

STYLES: 12192 WS-W2XL / 12193 GS-6L



PAGE 7 **NEW** **\$25.00**

WOMEN'S GALAXY

STYLES: 12172 WS-W2XL / 12173 GM-6L



PAGE 11 **\$26.00**

WOMEN'S FAUX FRONT

STYLES: 12142 WS-W2XL / 12143 GM-6L



PAGE 9 **TOP SELLER** **\$27.00**

WOMEN'S FLEX SHORT

STYLES: 15022 WS-W2XL / 15023 GS-6L



PAGE 17 **\$14.50**

SOFTBALL BOTTOMS

LIBERTY
STYLES: 22780 AS-A2XL / 22781 YXS-YL



PAGE 36 **\$17.50**

HAWK

STYLES: 22870 AS-A2XL / 22871 YXS-YL



PAGE 37 **\$18.00**

EVOLUTION S/S

STYLES: 72300 AS-A3XL / 72301 YS-YL



PAGE 39 **\$18.50**

PRINTED EVOLUTION S/S

STYLES: 72330 AS-A3XL / 72331 YS-YL



PAGE 39 **\$19.50**

KINETIC

STYLES: 22820 AS-A2XL / 22821 YXS-YL



PAGE 40 **\$22.00**

WILDCARD TWO-BUTTON

STYLES: 12200 AS-A3XL / 12201 YS-YL



PAGE 25 **TOP SELLER** **\$22.50**

IMPACT TWO-BUTTON

STYLES: 12070 AS-A3XL / 12071 YS-YL



PAGE 33 **\$28.00**

ACE TWO-BUTTON

STYLES: 12120 AS-A3XL / 12121 YS-YL



PAGE 31 **TOP SELLER** **\$29.50**

IMPACT FULL-BUTTON

STYLES: 12080 AS-A3XL / 12081 YS-YL



PAGE 33 **\$30.10**

ELLIPSE TWO-BUTTON

STYLES: 12050 AS-A3XL / 12051 YS-YL



PAGE 32 **\$30.50**

ACE FULL-BUTTON

STYLES: 12220 AS-A3XL / 12221 YS-YL



PAGE 35 **\$31.00**

ESSORTEX SLEEVELESS

STYLES: 32160 AS-A3XL / 32170 YM-YL



PAGE 36 **\$11.00**

BASICS

ATHLETIC SOCK

STYLE: 28030 SMALL, MEDIUM, LARGE



PAGE 51 **\$6.40**

SIX-PANEL CAP

STYLES: 19700 ADULT ONE SIZE / 19701 YOUTH ONE SIZE



PAGE 50 **\$4.60**

SPORT TWILL VISOR

STYLES: 19760 ADULT ONE SIZE / 19761 YOUTH ONE SIZE



PAGE 50 **\$5.00**

BASEBALL BELT

STYLES: 19820 ADULT ONE SIZE / 19821 YOUTH ONE SIZE



PAGE 50 **\$7.50**

DAGGER SLEEVE

STYLES: 29100 ADULT S/M & L/XL / 29101 YOUTH ONE SIZE



PAGE 50 **\$10.00**

QUALIFIER HEADBAND

STYLES: 29222 ONE SIZE FITS MOST



PAGE 50 **\$10.00**

MULTISPORT BACKPACK

STYLES: 27890 ONE SIZE



PAGE 47 **NEW** **\$30.00**





SHOWN WITH THE 15132
UNBELTED SOFTBALL PANT
SEE PAGE 23 FOR MORE INFORMATION



**NEW
FOR 2017**



SAMPLE PROGRAM
GET A SAMPLE 50% DEALER PRICE AT
WWW.HIGH5SPORTSWEAR.COM

DOUBLE PLAY JERSEY

12192 Women's WS, WM, WL, WXL \$25.00 W2XL \$29.00

12193 Girls' GS, GM, GL \$23.00

• Main Body is 100% Polyester seed mesh with Essortex moisture management • Fully faced two-button placket • Contrast 92% Polyester/8% Spandex stretch mesh armhole inserts and stretch mesh side panels • Double-needle hems • Droptail body





THE FAUX FRONT JERSEY
ALLOWS FOR EASY DECORATION



SAMPLE PROGRAM

GET A SAMPLE 50% DEALER PRICE AT
WWW.HIGH5SPORTSWEAR.COM



SHOWN WITH THE
15122 ARC SOFTBALL PANT
SEE PAGE 22 FOR MORE INFORMATION

FAUX FRONT JERSEY

12142 Women's WS, WM, WL, WXL \$27.00 W2XL \$31.00

12143 Girls' GM, GL \$25.00

• Main fabric in 100% polyester flatback mesh with moisture management wicking properties • Inserts in 92% polyester/8% spandex pinhole mesh

BLACK/WHITE/WHITE



COLUMBA BLUE/NAVY/WHITE



LIME/BLACK/WHITE



MARCOON/BLACK/WHITE



NAVY/SILVER GREY/WHITE



ORANGE/BLACK/WHITE



PURPLE/BLACK/WHITE



RASPBERRY/BLACK/WHITE



ROYAL/BLACK/WHITE



SCARLET/BLACK/WHITE



TEAL/BLACK/WHITE



WHITE/BLACK/WHITE





SHOWN WITH THE 15152 SPIRAL FULL-LENGTH SOFTBALL PANT
SEE PAGE 23 FOR MORE INFORMATION



DECORATION & VOLUME PRICING

FOR MORE INFORMATION, PLEASE CONTACT OUR
CUSTOMER CALL CENTER AT 800-222-4016 (9:00AM - 7:00PM EST)
OR EMAIL CUSTOMERCARE@HIGH5SPORTSWEAR.COM

SHOWN WITH THE 15152 SPIRAL FULL-LENGTH SOFTBALL PANT
SEE PAGE 23 FOR MORE INFORMATION

GALAXY FULL-BUTTON JERSEY

12172 Women's WS, WM, WL, WXL **\$26.00** W2XL **\$30.00**

12173 Girls' GM, GL **\$24.00**

• Main fabric in 100% polyester grid mock mesh with moisture management wicking properties • Inserts in 92% polyester / 8% spandex pinhole mesh

ATHLETIC GOLD/BLACK/WHITE



BLACK/BLACK/WHITE



COLUMBIA BLUE/NAVY/WHITE



NAVY/NAVY/WHITE



PURPLE/BLACK/WHITE



RASPBERRY/BLACK/WHITE



ROYAL/BLACK/WHITE



SCARLET/BLACK/WHITE



SCARLET/NAVY/WHITE



VEGA'S GOLD/BLACK/WHITE



WHITE/WHITE/SILVER GREY





THE WOMEN'S HAWK JERSEY FEATURING A WOMEN'S
SPECIFIC CONTOURED FIT DESIGNED FOR HER TEAM

WOMEN'S HAWK JERSEY

22872 Women's WXS, WS, WM, WL, WXL \$18.00 W2XL \$22.00

22871 Youth YXS, YS, YM, YL \$16.00

• 100% polyester with moisture management wicking properties • Comfortable two-piece collar



LIGHTNING V-NECK JERSEY

12182 Women's WS, WM, WL, WXL \$17.00 W2XL \$21.00

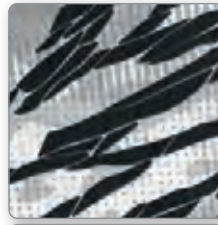
12183 Girl's YM, YL \$15.00

• 100% polyester with moisture management wicking properties • Contrast shoulders, side insert and piping





SHOWN WITH THE 15052 PROSTYLE LOW-RISE SOFTBALL PANT
SEE PAGE 22 FOR MORE INFORMATION



FRAGMENT PRINT DETAIL



SHOWN WITH THE
15102 PIPED PROSTYLE
LOW-RISE SOFTBALL PANT
SEE PAGE 23 FOR MORE INFO

SHOWN WITH THE
15052 PROSTYLE
LOW-RISE SOFTBALL PANT
SEE PAGE 22 FOR MORE INFO

WOMEN'S PRINTED EVOLUTION S/S

72332 Women's WS, WM, WL, WXL \$19.00 W2XL \$23.00

72333 Girls' GS, GM, GL \$17.00

• Main fabric: 100% polyester moisture management micro-interlock with mechanical stretch • Fragment print inserts & sleeves: 100% polyester micro pique • Contrast cover stitch

BLACK/FRAGMENT PRINT/WHITE



GRAPHITE/FRAGMENT PRINT/WHITE



NAVY/FRAGMENT PRINT/WHITE



RASP/FRAGMENT PRINT/WHITE



ROYAL/FRAGMENT PRINT/WHITE



SCARLET/FRAGMENT PRINT/WHITE



WHITE/FRAGMENT PRINT/WHITE



WOMEN'S EVOLUTION S/S

72322 Women's WS, WM, WL, WXL \$18.00 W2XL \$22.00

72323 Girls' GS, GM, GL \$16.00

• Main fabric: 100% polyester moisture management micro-interlock with mechanical stretch • Inserts: lightweight pinhole mesh 92% polyester/8% spandex • Contrast cover stitch

BLACK/GRAPHITE/WHITE



COLUMBIA BLUE/NAVY/WHITE



FOREST/GRAPHITE/WHITE



GRAPHITE/WHITE/WHITE



LIME/GRAPHITE/WHITE



MAROON/GRAPHITE/WHITE



NAVY/GRAPHITE/WHITE



ORANGE/GRAPHITE/WHITE



PURPLE/GRAPHITE/WHITE



RASPBERRY/GRAPHITE/WHITE



ROYAL/GRAPHITE/WHITE



SCARLET/GRAPHITE/WHITE



WHITE/WHITE/WHITE





WAVE JERSEY	12032 Women's WS, WM, WL, WXL \$18.00 W2XL \$22.00	12033 Girls' GS, GM, GL \$16.00
	• 100% polyester with moisture management wicking properties • Rib knit V-neck	



FLEX JERSEY	12022 Women's WS, WM, WL, WXL \$16.00 W2XL \$20.00	12023 Girls' GS, GM, GL \$14.00
	• 100% polyester with moisture management wicking properties • Rib knit V-neck	



FLEX SHORT	15022 Women's WS, WM, WL, WXL \$14.50 W2XL \$18.50	15023 Girls' GS, GM, GL \$13.50
	• 100% polyester with moisture management wicking properties • Elastic waistband with inside drawcord • 5" inseam on Women's Medium • 4" inseam on Girls' Medium	



SAMPLE PROGRAM

GET A SAMPLE 50% DEALER PRICE AT
WWW.HIGH5SPORTSWEAR.COM





THE DYNAMITE JERSEY IN
POLY/SPANDEX FOR ULTIMATE STRETCH.

SAMPLE PROGRAM

GET A SAMPLE 50% DEALER PRICE AT
WWW.HIGH5SPORTSWEAR.COM



SHOWN WITH THE
15122 ARC SOFTBALL PANT
SEE PAGE 22 FOR MORE INFORMATION



DYNAMITE JERSEY

12162 Women's WS, WM, WL, WXL \$18.00 W2XL \$22.00

12163 Girls' GS, GM, GL \$16.00

• Main fabric in 92% polyester/8% spandex with moisture management wicking properties

ATHLETIC GOLD/BLACK/WHITE



BLACK/BLACK/WHITE



COLUMBIA BLUE/BLACK/WHITE



FOREST/BLACK/WHITE



LIME/BLACK/WHITE



MAROON/BLACK/WHITE



NAVY/SILVER GREY/WHITE



ORANGE/BLACK/WHITE



PURPLE/BLACK/WHITE



RASPBERRY/BLACK/WHITE



ROYAL/BLACK/WHITE



SCARLET/BLACK/WHITE



TEAL/BLACK/WHITE



WHITE/BLACK/WHITE





SHOWN WITH THE 15052 PROSTYLE LOWRISE SOFTBALL
SEE PAGE 22 FOR MORE INFORMATION

DECORATION & VOLUME PRICING

FOR MORE INFORMATION, PLEASE CONTACT OUR
CUSTOMER CALL CENTER AT 800-222-4016 (9:00AM - 7:00PM EST)
OR EMAIL CUSTOMERCARE@HIGH5SPORTSWEAR.COM

SAMPLE PROGRAM

GET A SAMPLE 50% DEALER PRICE AT
WWW.HIGH5SPORTSWEAR.COM



SIX INCH NUMBER SIZE RECOMMENDED FOR
DOUBLE DIGIT APPLICATIONS



FEVER JERSEY

12152 Women's WS, WM, WL, WXL \$20.00 W2XL \$24.00

12153 Girls' GS, GM, GL \$18.00

• Main fabric is 100% polyester with moisture management wicking properties • Inserts and side panels of 92% polyester and 8% spandex pinhole mesh for comfort and breathability • Droptail body

ATHLETIC GOLD/BLACK/WHITE



BLACK/ORANGE/WHITE



BLACK/RASPBERRY/WHITE



BLACK/WHITE/SILVER GREY



COLUMBIA BLUE/NAVY/WHITE



FOREST/VEGAS GOLD/WHITE



LIME/BLACK/WHITE



MAROON/ATHLETIC GOLD/WHITE



NAVY/WHITE/SILVER GREY



ORANGE/BLACK/WHITE



ROYAL/BLACK/WHITE



ROYAL/SCARLET/WHITE



SCARLET/BLACK/WHITE



TEAL/BLACK/WHITE





PROSTYLE LOW-RISE SOFTBALL PANT

15052 Women's WS, WM, WL, WXL \$28.90 W2XL \$32.90

15053 Girls' GS, GM, GL \$26.90

- 14-oz. 100% polyester double-knit • Two-snap closure with nylon zipper • Double-layer fabric at knee area • Two double-welt set-in back pockets • Five pro-style belt loops • Elastic cuffs • Elastic waistband • Piping detail • 20 1/2" inseam on Women's Medium
- 15" inseam on Girl's Medium

BLACK



GRAPHITE



NAVY



SILVER GREY



WHITE



ARC SOFTBALL PANT

15122 Women's WS, WM, WL, WXL \$31.00 W2XL \$35.00

15123 Girls' GS, GM, GL \$29.00

- 14-oz. 100% polyester double-knit • Two-snap closure with brass zipper • Double-layer fabric at knee area • Two double-welt set-in back pockets • Elastic waistband with internal drawcord • Elastic cuffs • Piping detail • 20 3/4" inseam on Women's Medium
- 15 1/4" inseam on Girl's Medium

BLACK/LIME



BLACK/RASPBERRY



BLACK/WHITE



NAVY/WHITE



SILVER GREY/WHITE



WHITE/BLACK



WHITE/SCARLET



UNBELTED SOFTBALL PANT

15132 Women's WS, WM, WL, WXL \$22.00 W2XL \$26.00

15133 Girls' GS, GM, GL \$20.00

• 11-oz. 100% polyester double-knit • Two-snap closure with brass zipper • Double-layer fabric at knee area • Single patch back pocket • Elastic cuffs • Elastic waistband with internal drawcord • 20 3/4" inseam on Women's Medium • 15 1/4" inseam on Girl's Medium

BLACK



NAVY



SILVER GREY



WHITE



PIPED PROSTYLE LOW-RISE SOFTBALL PANT

15102 Women's WS, WM, WL, WXL \$33.30 W2XL \$37.30

15103 Girls' GS, GM, GL \$31.30

• 14-oz. 100% polyester double-knit • Two-snap closure with nylon zipper • Double-layer fabric at knee area • Two double-welt set-in back pockets • Five pro-style belt loops • Elastic cuffs • Elastic waistband • Piping detail • 20 1/2" inseam on Women's Medium • 15" inseam on Girl's Medium

BLACK/WHITE



NAVY/WHITE



WHITE/BLACK



SPIRAL FULL-LENGTH SOFTBALL PANT

15152 Women's WS, WM, WL, WXL \$33.00 W2XL \$37.00

15153 Girls' GS, GM, GL \$31.00

• Performance double-knit is a 15 oz. polyester with wicking and soil-release properties that are optimized for performance conditions • Double snap front with brass zipper fly • Elasticized waist with tunnel loops • Easy entry back pockets • Full length open bottom leg • Dual-ply knee protection • 32" inseam on Women's Medium • 26 1/2" inseam on Girl's Medium

BLACK



BLUE GREY



WHITE





SHOWN WITH THE 15040 CLASSIC DOUBLE-KNIT BASEBALL PANT
SEE PAGE 44 FOR MORE INFORMATION

DECORATION & VOLUME PRICING

FOR MORE INFORMATION, PLEASE CONTACT OUR
 CUSTOMER CALL CENTER AT 800-222-4016 (9:00AM - 7:00PM EST)
 OR EMAIL CUSTOMERCARE@HIGH5SPORTSWEAR.COM



ADULT & YOUTH SHOWN WITH THE 15080
 PIPED DOUBLE-KNIT BASEBALL PANT
 SEE PAGE 45 FOR MORE INFORMATION

TWO-BUTTON: Two-button placket for easy decoration

WILDCARD TWO-BUTTON JERSEY

12200 Adult AS, AM, AL, AXL \$22.50 A2XL \$26.50 A3XL \$28.50

12201 Youth YS, YM, YL \$20.50

• Main fabric in 92% polyester/8% spandex with moisture management wicking properties • Sleeves in 100% polyester with Essortex wicking properties

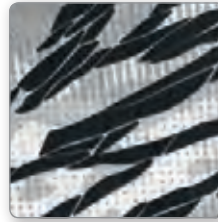




A CONTEMPORARY FRAGMENT PRINT
INSET MODERN UPDATE TO ONE OF
OUR MOST POPULAR STYLES

DECORATION & VOLUME PRICING

FOR MORE INFORMATION, PLEASE CONTACT OUR
 CUSTOMER CALL CENTER AT 800-222-4016 (9:00AM - 7:00PM EST)
 OR EMAIL CUSTOMERCARE@HIGH5SPORTSWEAR.COM



FRAGMENT PRINT DETAIL



SHOWN WITH THE 15040 CLASSIC
 DOUBLE-KNIT BASEBALL PANT
 SEE PAGE 44 FOR MORE INFORMATION

TWO-BUTTON: Two-button placket for easy decoration

BANDIT PRINT INSET TWO-BUTTON JERSEY

12230 Adult AS, AM, AL, AXL **\$26.50** A2XL **\$30.50** A3XL **\$32.50**

12231 Youth YS, YM, YL **\$24.50**

• Main fabric in 100% polyester with moisture wicking properties • Fragment Print inserts are 100% polyester micro pique

BLACK/FRAGMENT PRINT/WHITE



GRAY/FRAGMENT PRINT/WHITE



NAVY/FRAGMENT PRINT/WHITE



ROYAL/FRAGMENT PRINT/WHITE



SCARLET/FRAGMENT PRINT/WHITE



WHITE/FRAGMENT PRINT/WHITE



TWO-BUTTON: Two-button placket for easy decoration

BANDIT TWO-BUTTON JERSEY

12210 Adult AS, AM, AL, AXL **\$25.50** A2XL **\$29.50** A3XL **\$31.50**

12211 Youth YS, YM, YL **\$23.50**

• Main fabric in 100% polyester with moisture wicking properties • Side panels in 92% polyester/8% spandex for comfort and breathability

BLACK/SCARLET/WHITE



BLACK/SILVER GREY/WHITE



COLUMBIA BLUE/SILVER GREY/WHITE



FOREST/SILVER GREY/WHITE



MAROON/BLACK/WHITE



NAVY/SILVER GREY/WHITE



ORANGE/SILVER GREY/WHITE



PURPLE/BLACK/WHITE



ROYAL/SILVER GREY/WHITE



SCARLET/BLACK/WHITE



SILVER GREY/BLACK/WHITE



WHITE/BLACK/WHITE





SHOWN WITH THE 15040 CLASSIC DOUBLE-KNIT BASEBALL PANT
SEE PAGE 44 FOR MORE INFORMATION



ADULT SHOWN WITH THE 15080 PIPED DOUBLE-KNIT BASEBALL PANT SEE PAGE 45 FOR MORE INFORMATION



YOUTH SHOWN WITH THE 15040 CLASSIC DOUBLE-KNIT BASEBALL PANT SEE PAGE 44 FOR MORE INFORMATION

SAMPLE PROGRAM

GET A SAMPLE 50% DEALER PRICE AT WWW.HIGH5SPORTSWEAR.COM

TWO-BUTTON: Two-button placket for easy decoration

GRAVITY TWO-BUTTON JERSEY

12130 Adult AS, AM, AL, AXL **\$26.00** AZXL **\$30.00**

12131 Youth YS, YM, YL **\$24.00**

• Main fabric in 100% polyester with moisture management wicking properties • Side panel inserts of 92% polyester and 8% spandex pinhole mesh



SIDE PANELS MATCH SLEEVES



SIDE PANELS MATCH BODY

SIDE PANELS MATCH CHEST INSERTS



ALSO AVAILABLE IN FULL BUTTON ON PAGE 35

DECORATION & VOLUME PRICING

FOR MORE INFORMATION, PLEASE CONTACT OUR
 CUSTOMER CALL CENTER AT 800-222-4016 (9:00AM - 7:00PM EST)
 OR EMAIL CUSTOMERCARE@HIGH5SPORTSWEAR.COM



BOTH ADULT & YOUTH SHOWN
 WITH THE 15080 PIPED
 DOUBLE-KNIT BASEBALL PANT
 SEE PAGE 45 FOR MORE INFORMATION

TWO-BUTTON: Two-button placket for easy decoration

ACE TWO-BUTTON JERSEY

12120 Adult AS, AM, AL, AXL **\$29.50** A2XL **\$33.50** A3XL **\$35.50**

12121 Youth YS, YM, YL **\$27.50**

• Main fabric in 100% polyester with Essortex wicking properties • Side panels in 92% polyester/8% spandex for comfort and breathability





SHOWN WITH THE 15050 PIPED CLASSIC
DOUBLE-KNIT BASEBALL PANT
SEE PAGE 44 FOR MORE INFORMATION

DECORATION & VOLUME PRICING

FOR MORE INFORMATION, PLEASE CONTACT OUR
CUSTOMER CALL CENTER AT 800-222-4016 (9:00AM - 7:00PM EST)
OR EMAIL CUSTOMERCARE@HIGH5SPORTSWEAR.COM

TWO-BUTTON: Two-button placket for easy decoration

ELLIPSE TWO-BUTTON JERSEY	12050 Adult AS, AM, AL, AXL \$30.50 A2XL \$34.50 A3XL \$36.50	12051 Youth YS, YM, YL \$28.50
----------------------------------	---	--

• 100% polyester with moisture management wicking properties • Droptail body • Silver Grey inset panel with piping detail



SAMPLE PROGRAM

GET A SAMPLE 50% DEALER PRICE AT
WWW.HIGH5SPORTSWEAR.COM



SILVER GREY COLOR MATCHES BOTH THE CLASSIC AND 14-OZ. DOUBLE-KNIT BASEBALL PANTS



ADULT & YOUTH SHOWN WITH THE 15080 PIPED DOUBLE-KNIT BASEBALL PANT
SEE PAGE 45 FOR MORE INFORMATION

TWO-BUTTON: Two-button placket for easy decoration

IMPACT TWO-BUTTON JERSEY

12070 Adult AS, AM, AL, AXL \$28.00 A2XL \$32.00 A3XL \$34.00

12071 Youth YS, YM, YL \$26.00

• 100% polyester flatback mesh with moisture management wicking properties • Droptail body



FULL-BUTTON: Six-button front spaced for easy decoration (youth has five buttons)

IMPACT FULL-BUTTON JERSEY

12080 Adult AS, AM, AL, AXL \$30.10 A2XL \$34.10 A3XL \$36.10

12081 Youth YS, YM, YL \$28.10

• 100% polyester flatback mesh with moisture management wicking properties • Droptail body





ALSO AVAILABLE IN TWO BUTTON ON PAGE 31



DECORATION & VOLUME PRICING

FOR MORE INFORMATION, PLEASE CONTACT OUR
 CUSTOMER CALL CENTER AT 800-222-4016 (9:00AM - 7:00PM EST)
 OR EMAIL CUSTOMERCARE@HIGH5SPORTSWEAR.COM



FULL-BUTTON: Six-button front spaced for easy decoration (youth has five buttons)

ACE FULL-BUTTON JERSEY

12220 Adult AS, AM, AL, AXL **\$31.00** A2XL **\$35.00** A3XL **\$37.00**

12221 Youth YS, YM, YL **\$29.00**

• Main fabric in 100% polyester with Essortex wicking properties • Side panels in 92% polyester/8% spandex for comfort and breathability





SAMPLE PROGRAM
 GET A SAMPLE 50% DEALER PRICE AT
WWW.HIGH5SPORTSWEAR.COM



LIBERTY JERSEY	22780 Adult AS, AM, AL, AXL \$17.50 AZXL \$21.50	22781 Youth YS, YM, YL \$15.50
-----------------------	---	---------------------------------------

• 100% polyester with moisture management wicking properties



UNDERSIZE

ESSORTEX SLEEVELESS SHIRT	32160 Adult AS, AM, AL, AXL \$11.00 A2XL \$15.00 A3XL \$18.00	32170 Youth YM, YL \$10.00
----------------------------------	--	-----------------------------------

• 100% polyester with moisture management wicking properties • Undersize styles are designed to fit under a jersey, choose one size up for a looser fit





SHOWN WITH THE 15040 CLASSIC DOUBLE-KNIT BASEBALL PANT
SEE PAGE 44 FOR MORE INFORMATION

HAWK JERSEY

22870 Adult AS, AM, AL, AXL \$18.00 AZXL \$22.00

22871 Youth YXS, YS, YM, YL \$16.00

• 100% polyester with moisture management wicking properties • Comfortable two-piece collar



TWO-BUTTON: Two-button placket for easy decoration

ESSORTEX TWO-BUTTON JERSEY

12060 Adult AS, AM, AL, AXL \$16.50 AZXL \$20.50 A3XL \$22.50

12061 Youth YS, YM, YL \$15.50

• 100% polyester with moisture management wicking properties





SHOWN WITH THE 15040 CLASSIC
DOUBLE-KNIT BASEBALL PANT
SEE PAGE 44 FOR MORE INFORMATION



FRAGMENT PRINT DETAIL



PRINTED EVOLUTION S/S JERSEY SHOWN WITH THE 15040 CLASSIC DOUBLE-KNIT BASEBALL PANT SEE PAGE 44 FOR MORE INFORMATION

EVOLUTION S/S JERSEY SHOWN WITH THE 15080 PIPED DOUBLE-KNIT BASEBALL PANT SEE PAGE 45 FOR MORE INFORMATION

PRINTED EVOLUTION S/S

72330 Adult AS, AM, AL, AXL **\$19.50** A2XL **\$23.50** A3XL **\$25.50**

72331 Youth YS, YM, YL **\$17.50**

• Main fabric: 100% polyester moisture management micro-interlock with mechanical stretch • Fragment print inserts & sleeves: 100% polyester micro pique • Contrast cover stitch

BLACK/FRAGMENT PRINT/WHITE



GRAPHITE/FRAGMENT PRINT/WHITE



NAVY/FRAGMENT PRINT/WHITE



ROYAL/FRAGMENT PRINT/WHITE



SCARLET/FRAGMENT PRINT/WHITE



WHITE/FRAGMENT PRINT/WHITE



EVOLUTION S/S

72300 Adult AS, AM, AL, AXL **\$18.50** A2XL **\$22.50** A3XL **\$24.50**

72301 Youth YS, YM, YL **\$16.50**

• Main fabric is 100% polyester wicking micro interlock with mechanical stretch • Inserts are lightweight pinhole mesh, 92% polyester/8% spandex

ATH GOLD/GRAPHITE/WHITE



BLACK/GRAPHITE/WHITE



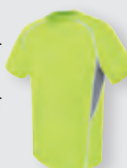
FOREST/GRAPHITE/WHITE



GRAPHITE/GRAPHITE/WHITE



LIME/GRAPHITE/WHITE



MAROON/GRAPHITE/WHITE



NAVY/GRAPHITE/WHITE



ORANGE/GRAPHITE/WHITE



PURPLE/GRAPHITE/WHITE



ROYAL/GRAPHITE/WHITE



SCARLET/GRAPHITE/WHITE



WHITE/WHITE/WHITE





SAMPLE PROGRAM

GET A SAMPLE 50% DEALER PRICE AT
WWW.HIGH5SPORTSWEAR.COM



ADULT & YOUTH SHOWN WITH THE
 15040 CLASSIC DOUBLE-KNIT BASEBALL PANT
 SEE PAGE 44 FOR MORE INFORMATION

KINETIC JERSEY

22820 Adult AS, AM, AL, AXL \$22.00 A2XL \$26.00

22821 Youth YXS, YS, YM, YL \$20.00

• 100% polyester with moisture management wicking properties • Contrast collar and cover stitch details



DECORATION & VOLUME PRICING

FOR MORE INFORMATION, PLEASE CONTACT OUR
 CUSTOMER CALL CENTER AT 800-222-4016 (9:00AM - 7:00PM EST)
 OR EMAIL CUSTOMERCARE@HIGH5SPORTSWEAR.COM



TEMPEST JERSEY

22710 Adult AS, AM, AL, AXL \$24.50 AZXL \$28.50

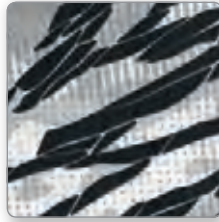
22711 Youth YXS, YS, YM, YL \$22.50

• 100% polyester with moisture management wicking properties • Piping detail on front and back





SHOWN WITH THE 15040 CLASSIC
DOUBLE-KNIT BASEBALL PANT
SEE PAGE 44 FOR MORE INFORMATION



FRAGMENT PRINT DETAIL



DECORATION & VOLUME PRICING

FOR MORE INFORMATION, PLEASE CONTACT OUR
 CUSTOMER CALL CENTER AT 800-222-4016 (9:00AM - 7:00PM EST)
 OR EMAIL CUSTOMERCARE@HIGH5SPORTSWEAR.COM

PRINTED EVOLUTION L/S	72340 Adult AS, AM, AL, AXL \$24.00 A2XL \$28.00 A3XL \$30.00	72341 Youth YS, YM, YL \$22.00
• Main fabric is 100% polyester moisture management micro-interlock with mechanical stretch • Fragment print inserts & sleeves: 100% polyester micro pique • Contrast cover stitch		

BLACK/FRAGMENT PRINT/WHITE



GRAPHITE/FRAGMENT PRINT/WHITE



NAVY/FRAGMENT PRINT/WHITE



ROYAL/FRAGMENT PRINT/WHITE



SCARLET/FRAGMENT PRINT/WHITE



WHITE/FRAGMENT PRINT/WHITE



EVOLUTION L/S	72310 Adult AS, AM, AL, AXL \$23.00 A2XL \$27.00 A3XL \$29.00	72311 Youth YS, YM, YL \$21.00
• Main fabric: 100% polyester moisture management micro-interlock with mechanical stretch • Inserts: lightweight pinhole mesh 92% polyester/8% spandex • Contrast cover stitch		

BLACK/GRAPHITE/WHITE



FOREST/GRAPHITE/WHITE



GRAPHITE/GRAPHITE/WHITE



MAROON/GRAPHITE/WHITE



NAVY/GRAPHITE/WHITE



ORANGE/GRAPHITE/WHITE



ROYAL/GRAPHITE/WHITE



SCARLET/GRAPHITE/WHITE



WHITE/WHITE/WHITE





CLASSIC DOUBLE-KNIT BASEBALL PANT

15040 Adult AS, AM, AL, AXL \$28.30 AZXL \$32.30

15041 Youth YXS, YS, YM, YL \$24.30

• 11-oz. 100% polyester double-knit • Two-snap closure with nylon zipper • Five pro-style belt loops • Double-layer fabric at knee area • Two double-welt set-in back pockets • Two double-welt set-in back pockets • Elastic waistband • Double-needle hems (easily shortened for custom length) • 33" inseam on Adult Medium • 25 1/2" inseam on Youth Medium

GRAPHITE



SILVER GREY



WHITE



PIPED CLASSIC DOUBLE-KNIT BASEBALL PANT

15050 Adult AS, AM, AL, AXL \$30.00 AZXL \$34.00

15051 Youth YXS, YS, YM, YL \$28.00

• 11-oz. 100% polyester double-knit • Contrasting piping sewn in side seam • Two-snap closure with nylon zipper • Five pro-style belt loops • Double-layer fabric at knee area • Two double-welt set-in back pockets • Elastic waistband • Double-needle hems (easily shortened for custom length) • 33" inseam on Adult Medium • 25 1/2" inseam on Youth Medium

SILVER GREY/BLACK



SILVER GREY/FOREST



SILVER GREY/NAVY



SILVER GREY/ROYAL



SILVER GREY/SCARLET



WHITE/BLACK



WHITE/FOREST



WHITE/NAVY



WHITE/ROYAL



WHITE/SCARLET



PIPED DOUBLE-KNIT BASEBALL PANT

15080 Adult AS, AM, AL, AXL \$35.40 A2XL \$39.40

15081 Youth YXS, YS, YM, YL \$29.40

• 14-oz. 100% polyester double-knit with moisture management wicking properties • Two-snap closure with brass zipper • Seven pro-style belt loops • Double-layer fabric at knee area • Two double-welt set-in back pockets • Anti-roll elastic waistband • Double-needle hems (easily shortened for custom length) • 33" inseam on Adult Medium • 25 1/2" inseam on Youth Medium

SILVER GREY/BLACK



SILVER GREY/NAVY



SILVER GREY/ROYAL



SILVER GREY/SCARLET



WHITE/BLACK



WHITE/NAVY



WHITE/ROYAL



WHITE/SCARLET



DOUBLE-KNIT PULL-UP BASEBALL PANT

19420 Adult AS, AM, AL, AXL \$13.80 A2XL \$17.80

19421 Youth YXS, YS, YM, YL \$9.80

• 10.5-oz. 100% polyester double-knit • Double-layer fabric at knee area • Back patch pocket on right • Four-needle, 2" elastic waistband with inside drawcord • Elastic waistband • 24" inseam on Adult Medium • 17" inseam on Youth Medium

BLACK



SILVER GREY



WHITE





HOLLOWAY

CUSTOM SUBLIMATION FOR YOUR TEAM

YOUR COLORS, YOUR PATTERNS, YOUR DECORATION FOR ONE PRICE



4
SUBLIMATION
7

**4 PIECE MINIMUM.
4 WEEK SHIPMENT.
GUARANTEED.**

Sublimation From Holloway

Use Holloway's online builder to design and preview your custom uniform. Go to hollowayusa.com/customsublimation to get started.

High Five accounts are given automatic access to Holloway. To sign up for a Holloway account simply visit the new account page and enter your High Five account number.

NEW FOR 2017

MULTISPORT BACKPACK

27890 18.5" TALL x 12" WIDTH x 7" DEPTH \$30.00

• Constructed of 100% Polyester Heavy Denier • Front zipper pocket with deep interior pouch holds shoes or accessories • Large main interior compartment • Convertible mesh pouch stashes when not in use • Reinforced multiuse side pouch pockets with bat straps • Side pouch pockets for water bottle, with pass-thru for lacrosse stick or bat • Decoration ready

**NEW
FOR 2017**



SHOWN WITHOUT MESH HELMET HOLDER

ATHLETIC GOLD/GRAPHITE/BLACK



BLACK/GRAPHITE/BLACK



FOREST/GRAPHITE/BLACK



GRAPHITE/GRAPHITE/BLACK



MAROON/GRAPHITE/BLACK



NAVY/GRAPHITE/BLACK



ORANGE/GRAPHITE/BLACK



PURPLE/GRAPHITE/BLACK



ROYAL/GRAPHITE/BLACK



SCARLET/GRAPHITE/BLACK





NEW FOR 2017

CONVERTIBLE DRAWSTRING BAG

27920 14" TALL x 18" WIDTH \$11.00

• 100% Polyester • Drawstring main compartment • Convertible mesh pouch stashes when not in use • Decoration ready

BLACK/GRAPHITE



GRAPHITE/BLACK



NAVY/GRAPHITE



ROYAL/GRAPHITE



SCARLET/GRAPHITE



NEW FOR 2017



SHOWN WITHOUT MESH HELMET HOLDER

BACKPACK

27850 17" TALL x 18" WIDTH x 9" DEPTH \$23.50

• Adjustable padded shoulder straps, hand strap and corded zipper pulls • Heavy duty 600D polyester with soft PVC backing • Two zippered side compartments with mesh panels • Mesh paneled zippered interior helmet compartment

ATH GOLD/BLACK/WHITE



BLACK/BLACK/WHITE



FOREST/BLACK/WHITE



GRAPHITE/BLACK/WHITE



MAROON/BLACK/WHITE



NAVY/BLACK/WHITE



ORANGE/BLACK/WHITE



PURPLE/BLACK/WHITE



ROYAL/BLACK/WHITE



SCARLET/BLACK/WHITE



GEAR BAG

27870 19" TALL x 10.5" WIDTH x 10.5" DEPTH **\$27.00**

- 100% polyester heavy denier with soft PVC backing and mesh side panels for ventilation
- Drawstring top closure with rainflap
- ID holder on back
- Front zippered pocket with deep interior pouch holds shoes or accessories
- Backpack shoulder straps
- Versatile interior compartment features flexible divider, separating the ventilated front section from the main compartment
- Ball fits in either section of the main compartment



TRAINING BAG

27790 22" LONG x 12" TALL x 12" WIDTH **\$25.00**

- Heavy duty 600D polyester with soft PVC backing
- Two zippered end compartments and one zippered side compartment
- Hand straps, adjustable shoulder straps, and corded zipper pulls



ELITE TRAINING BAG

27880 22" LONG x 12" TALL x 12" WIDTH **\$28.00**

- Heavy duty 600D polyester with PVC backing
- Features two large zippered end compartments, internal shoe pouch, one zippered side compartment
- Hand straps with adjustable shoulder strap and corded zipper pulls



STADIUM EQUIPMENT BAG

27720 36" LONG x 13" TALL x 14" WIDTH **\$28.50**

- 600 denier polyester with PVC backing
- Zippered side pocket
- Corded zipper pulls
- Hand straps
- Adjustable shoulder strap



DECORATION & VOLUME PRICING

FOR MORE INFORMATION, PLEASE CONTACT OUR
CUSTOMER CALL CENTER AT 800-222-4016 (9:00AM - 7:00PM EST)
OR EMAIL CUSTOMERCARE@HIGH5SPORTSWEAR.COM



COTTON TWILL SIX-PANEL CAP

19700 Adult ONE SIZE \$4.60

19701 Youth ONE SIZE \$4.60

• 100% cotton twill cap • Low profile pro-style crown with curved visor • Fused buckram-backed front panels • Color matching sewn eyelets • Plastic snap size adjuster



SPORT TWILL VISOR

19760 Adult ONE SIZE \$5.00

19761 Youth ONE SIZE \$5.00

• 100% cotton twill washed for softness • Three panels with curved visor • Sweatband folds down for easy embroidering • Hook and loop fastener



QUALIFIER HEADBAND

29222 ONE SIZE FITS MOST \$10.00

• Fit Type: Fitted, ONE SIZE FITS MOST • Maze Mesh fabric is a dry-Excel™ 94% polyester/6% spandex that is layered with our dry-Excel™ micro-Interlock • Interior silicone elastic gripper helps keep headband secure



DAGGER SLEEVE

29100 Adult S/M \$10.00 L/XL \$10.00

29101 Youth ONE SIZE \$8.00

SLEEVES SOLD INDIVIDUALLY • Fit Type: Compression • 4-Way compression stretch fabric in 86% polyester/14% spandex • Flatlock stitching to reduce skin abrasion • Elasticized top hem to secure in place



BASEBALL BELT

19820 Adult FITS WAIST SIZES 32"-46" \$7.50

19821 Youth FITS WAIST SIZES 18"-32" \$7.00

• 1½" wide elastic webbing on Adult • 1¼" wide elastic webbing on Youth • Matching vinyl tabs • Nickel finish buckle and adjustable slider easily fits through all belt loops



**PLEASE VISIT HIGH5SPORTSWEAR.COM
FOR OUR COMPLETE LINE OF SOCKS**

ATHLETIC SOCK

28030 X-SMALL (15") \$6.10 SMALL (18") \$6.10 MEDIUM (24") \$6.40 LARGE (30") \$6.70

• 80% acrylic/14% nylon/6% elastic • Solid color tube sock



GAME SOCK

19810 SMALL (15") \$5.60 MEDIUM (19") \$5.80 LARGE (24") \$6.10

• 91% nylon/5% polyester/4% elastic • Solid color tube sock



STIRRUP SOCK

19800 SMALL (15") \$5.70 MEDIUM (19") \$5.90 LARGE (24") \$6.20

• 43% polyester/35% cotton/16% acrylic/6% elastic • White sock with knitted-in stirrup



SOCK SIZING RECOMMENDATIONS

19800 STIRRUP SOCK • 19810 GAME SOCK • 28030 ATHLETIC SOCK

SMALL: Fit's Women's shoe sizes 4-5 & Youth 1-3 **MEDIUM:** Fits Men's shoe sizes 6-8 & Women's shoe sizes 5-9 **LARGE:** Fit's Men's shoes sizes 9-13+ & Women's 9-12+

SIZE CHARTS

MEASUREMENTS SHOWN BELOW ARE BODY MEASUREMENTS - NOT ACTUAL GARMENT MEASUREMENTS

ADULT | YOUTH

JERSEYS | TRAINING TOPS

RECOMMENDED SIZE	INDIVIDUAL CHEST SIZE
YXXS	20" - 21"
YXS	21" - 23"
YS	24" - 26"
YM	27" - 30"
YL	31" - 34"
AS	34" - 36"
AM	37" - 40"
AL	41" - 44"
AXL	45" - 48"
A2XL	49" - 52"
A3XL	53" - 56"

SHORTS | TRAINING BOTTOMS

RECOMMENDED SIZE	INDIVIDUAL WAIST SIZE
YXXS	19" - 20"
YXS	20" - 22"
YS	22" - 24"
YM	24" - 26"
YL	26" - 28"
YXL	28" - 30"
AS	29" - 30"
AM	31" - 34"
AL	35" - 38"
AXL	39" - 42"
A2XL	43" - 46"
A3XL	47" - 50"

WOMEN'S | GIRLS'

JERSEYS | TRAINING TOPS

RECOMMENDED SIZE	INDIVIDUAL CHEST SIZE
GS	23" - 25"
GM	26" - 29"
GL	30" - 33"
WXS	32" - 33"
WS	34" - 35"
WM	36" - 37"
WL	38" - 40"
WXL	41" - 43"
W2XL	44" - 47"

SHORTS | TRAINING BOTTOMS

RECOMMENDED SIZE	INDIVIDUAL WAIST SIZE
GS	20" - 22"
GM	23" - 24"
GL	24" - 25"
WXS	22" - 24"
WS	25" - 27"
WM	28" - 30"
WL	31" - 33"
WXL	34" - 36"
W2XL	37" - 39"

GL DIFFERS FROM **WXS** IN BUST SHAPING, AND FIT THROUGH HIPS AND WAIST

GL DIFFERS FROM **WS** IN RISE, INSEAM, AND FIT THROUGH HIPS

UNDERSIZED - GARMENTS SPECIFICALLY MARKED UNDERSIZED ARE INTENDED TO BE CLOSE FITTING, PERFECT AS THE FIRST LAYER OF YOUR UNIFORM.

IF YOU PREFER A LOOSE FIT - WE RECOMMEND ORDERING UNDERSIZED GARMENTS ONE SIZE LARGER THAN YOUR CHEST IN THE ABOVE SIZE CHART.

FOR NEARLY THIRTY YEARS

HIGH FIVE[®]

HAS LED THE INDUSTRY IN...

PRODUCT AVAILABILITY

UNMATCHED PRODUCT AVAILABILITY BACKED
BY STRONG INVENTORY LEVELS.

SERVICE

THE BEST CUSTOMER SERVICE IN THE TEAM INDUSTRY.
ORDERS PLACED BY 6 PM EST SHIP SAME DAY.
WE REACH 90% OF OUR CUSTOMERS IN 3 DAYS OR LESS.

QUALITY

HIGH FIVE PRODUCTS ARE BUILT TO LAST
SEASON AFTER SEASON.

DEEP IN COLOR & SIZE

COLOR OFFERINGS TO SATISFY THE LARGEST LEAGUES
AND A SIZE SCALE FOR CLUBS OF ALL AGES.

VALUE

UNIFORMS DECORATED TO YOUR SPECIFICATIONS.
PACKAGED AND BUNDLED BY INDIVIDUAL TEAM.



TO ORDER CALL: (800) 222-4016

NOW OPEN FROM 9:00AM TO 7:00PM EST | FAX (937) 494-2610

WWW.HIGH5SPORTSWEAR.COM

HIGH FIVE[®] IS A REGISTERED TRADEMARK OF HIGH 5 SPORTSWEAR, INC.,

2633 CAMPBELL ROAD SIDNEY, OHIO 45365

PRICES SUBJECT TO CHANGE WITHOUT NOTICE

